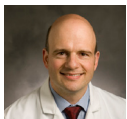




ACTIVITY DIRECTOR:
 Madhav Swaminathan, MD, FASE, FAHA
 Associate Professor of Anesthesiology
 Director, Perioperative TEE Service



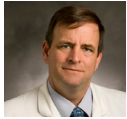
ACTIVITY CO-DIRECTOR:
 G. Burkhard Mackensen, MD, PhD, FASE
 Associate Professor of Anesthesiology



Solomon Aronson, MD, FACC, FACCP,
 FAHA, FASE
 Professor of Anesthesiology, Executive Vice
 Chairman, Business Development & Finance



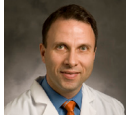
Katherine P. Grichnik, MD, FASE
 Associate Professor of Anesthesiology



Steven E. Hill, MD
 Associate Professor of Anesthesiology



Joseph P. Mathew, MD, FASE
 Professor of Anesthesiology
 Chief of Cardiothoracic Anesthesiology



Mihai V. Podgoreanu, MD, FASE
 Assistant Professor of Anesthesiology



Andrew D. Shaw, MD
 Associate Professor of Anesthesiology



Mark Stafford-Smith, MD, FASE
 Associate Professor of Anesthesiology
 Director, Cardiothoracic Anesthesia and Critical Care
 Fellowship



Ian J. Welsby, MD
 Assistant Professor of Anesthesiology

ACTIVITY COORDINATOR:
 Jaime C. Cooke
 919-681-6532
jca24@notes.duke.edu

DISCLAIMER:
 The material presented in this brochure is meant for the sole use of persons intending to enhance their intraoperative echocardiography skills.

Every effort has been made in supplying information that is accurate and current. However, the Perioperative TEE Service at Duke University Medical Center does not accept responsibility for errors or omissions and accepts no liability for any loss or damage howsoever arising.

Visiting preceptors must make their own travel arrangements, including lodging and boarding during the Preceptorship week. The Perioperative TEE Service staff can assist the preceptors in booking accommodation, but does not guarantee availability thereof.

International visitors must make their own travel arrangements as stated above, including travel visa at their closest US Embassy/Consulate (information on locations available on the internet at <http://usembassy.state.gov/>).

Please apply for and obtain the necessary visa well in advance. The refund policy on the registration page remains the same for international travelers. The Perioperative TEE Service, Department of Anesthesiology or Duke University Medical Center cannot be held responsible for visa denials at the US Embassy/Consulate. International visitors must also register with Duke Visa Services. On arrival, the Preceptorship coordinator will assist with registration procedures with Duke Visa Services.

Although every effort will be made to provide the best experience of intraoperative echocardiography in cardiac surgery cases, we cannot guarantee that a fixed number of cardiac surgeries will be performed during the Preceptorship week and cannot be held responsible for surgery cancellations for whatever reasons. In the event of cancelled surgeries or low case volumes, we will hold didactic teaching with emphasis on interactive sessions and case reviews with expert faculty.

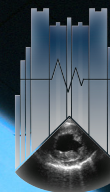
DUKE CME: TRANSFORMING KNOWLEDGE

The Division of Cardiothoracic
 Anesthesia and Critical Care Medicine,
 The Department of Anesthesiology
 PRESENTS

Visiting Preceptorship in Intraoperative Transesophageal Echocardiography

Sponsored by the
 Duke University
 School of
 Medicine.

2011-2012 Dates Available!



Duke Perioperative
 TEE Service
 Duke University
 Medical Center
 Durham, North Carolina

Featuring the Heartworks™
 TEE Simulator



DukeMedicine

<http://anesthesiology.duke.edu>

STATEMENT OF NEED

Participants in the Duke Intraoperative TEE Preceptorship spend one three-day session in the cardiac operating suites, observing techniques of intraoperative TEE and interpretation of images. Preceptors will participate in active discussions with cardiothoracic anesthesia faculty and fellows, and learn the basic TEE exam. They will also learn how to troubleshoot difficult cases and enhance their decision-making skills in the operating room. Cases will be reviewed with fellows and faculty and images from pathology libraries will be used to augment the preceptorship experience.

TARGET AUDIENCE AND PREREQUISITES

This TEE Preceptorship Course is designed for physicians involved in perioperative care of patients with cardiovascular disease who desire to enhance their diagnostic skills with transesophageal echocardiography. Participating physicians should have a basic understanding of techniques of echocardiography in practice or through other instructional courses. Physicians who plan to take the National Board of Echocardiography examination in perioperative TEE will benefit from the preceptorship experience.

LEARNING OBJECTIVES

At the conclusion of this preceptorship, the learner should be better able to:

1. Delineate a comprehensive intraoperative TEE exam
2. Assess global cardiac function and identify valvular pathology
3. Identify and assess the severity of native and prosthetic valvular dysfunction

COURSE FEATURES

1. Dedicated time on the TEE Simulator with guided instruction on correlation of imaging planes with cardiac anatomy.
2. Preceptorship is observation only.*
3. Two preceptors per three day session
4. Cases in OR start around 7:00 a.m.
5. Rounds in OR with faculty and TEE fellow
6. Machine 'knobology', probe handling and maintenance
7. The basic TEE exam and views to obtain
8. Live 3D TEE in action
9. 3D TEE Data acquisition and analysis
10. Interactive discussions in the operating room on decision-making
11. Estimating ejection fraction
12. Hemodynamic calculations
13. National Board of Echocardiography TEE exam information
14. Discussion on unusual pathology and complex case

REGISTRATION

TEE Preceptorship Registration:

1. Register online:
<http://anesthesiology.duke.edu>
2. Look for what Preceptorship three day sessions are available
3. Book your preferred Preceptorship session
4. Sign-up for consideration on a waiting list for sessions already booked
5. Special Duke rates at nearby hotels
6. Printable itinerary for the session sent to you by email
7. Credit card and other convenient payment options available on the website

What's included:

1. Tuition for the Preceptorship session
2. Handout with information on intraoperative TEE on CD-ROM
3. CME Certificate
4. Preceptorship completion certificate
5. Textbook on echocardiography
6. Parking at Duke North Hospital
7. Breakfast and lunch cards at the hospital cafeteria
8. Certificate of completion of basic TEE simulation-based training

** No 'hands-on' experience or patient contact permitted. NC Medical Board license and Duke Hospital credentialing is mandatory for clinical patient contact.*

FEES AND POLICIES

Tuition: **\$4,500** for the TEE Preceptorship three day session and must be made at least 6 weeks prior to start date. See website for details on how to add additional days.

Payment options: Mastercard & Visa credit cards ONLY. See website for payment options.

Cancellation/Refund Policy: A written notice of cancellation must be received 6 weeks prior to the start of this activity to receive a full refund minus 3% processing fee. No refunds will be given if cancellation requests are received within 3 weeks prior to the start date of this activity.

CME INFORMATION

Accreditation: The Duke University School of Medicine is accredited by the Accreditation Council for Continuing Medical Education (ACCME) to provide continuing medical education for physicians.

Credit Designation: The Duke School of Medicine designates this educational activity for a maximum of **27 AMA PRA Category 1 Credits™**. Physicians should only claim credit commensurate with the extent of their participation in the activity.

Disclosure Statement: The Duke University School of Medicine adheres to ACCME Essential Areas, Standards, and Policies regarding industry support of continuing medical education. Disclosure of the planning committee and faculty's commercial relationships will be made known at the activity. Speakers are required to openly disclose any limitations of data and/or any discussion of any off-label, experimental, or investigational uses of drugs or devices in their presentations.

Resolution of Conflicts of Interest: In accordance with the ACCME Standards for Commercial Support of CME, the Duke University School of Medicine will implement mechanisms, prior to the planning and implementation of this CME activity, to identify and resolve conflicts of interest for all individuals in a position to control content of this CME activity.

Disclaimer: The information provided at this CME activity is for continuing medical education purposes only and is not meant to substitute the independent medical judgment of a physician relative to diagnostic and treatment options of a specific patient's medical condition.

Special Needs: The Duke Department of Anesthesiology is committed to making its activities accessible to all individuals. If you are in need of an accommodation, please do not hesitate to call and/or submit a description of your needs in writing in order to receive service.

